

Conservation of traditional Building Culture in the Romanian Danube Delta





Index of presentation

Index

Traditional Architecture in the Romanian Danube Delta

Surface area – visible dimension of local Architecture

Subsurface area – invisible dimension of local Architecture

Conservation of traditional Architecture in the Romanian Danube Delta – *Project description*

Traditional Architecture in the Romanian Danube Delta

Surface area

visible dimension of local Architecture

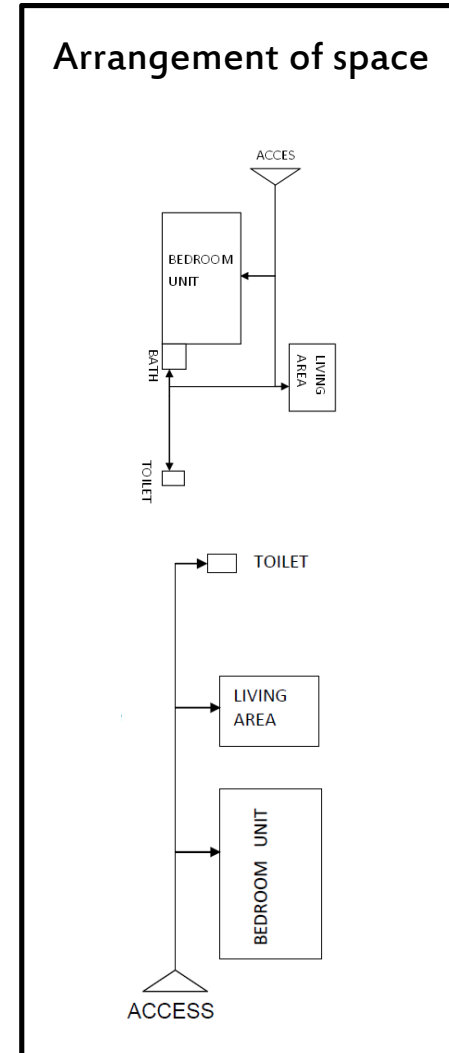
- Appearance of houses
- Structural elements
- Arrangement of space

Subsurface area

invisible dimension of local Architecture



Surface area visible dimension of local Architecture



Traditional Architecture in the Romanian Danube Delta

Surface area

visible dimension of local Architecture

Subsurface area

invisible dimension of local Architecture

- Building material
- Construction methods



Subsurface area invisible dimension of local Architecture

Building material

reed

wood

straw

sand

loam

clay



Construction methods

Thatching roofs



Chiprici

Ciamur

Current issues



Traditional knowledge buried in oblivion

Invisibility on European scale

Restricted access to local material

Building restrictions from the EU

Conservation of traditional building culture in the Romanian Danube Delta



Sfistofca Art Association



Skilled employee in mudbrick building



Transmission of traditional knowledge
and handicraft



Implementation of a Clay n' reed studio

Sfistofca Art Association



Skilled employee in earth building

finding locals - still aware of traditional handicraft and construction methods

finding locals - future professionals

connecting local professional with other national professionals

awareness of ancient construction methods + certification in earth-building



Transmission of traditional knowledge and handicraft

finding respective locals to pass knowledge to younger generation

contacting local + international schools + organising workshops

contacting universities or student associations for exchange

exchange with international trainees in bricklayer



Implementation of the Clay n' reed studio

constructed together with architecture
students

experments and meeting point

workmanship for local projects

location: Periprava





Thank you for your attention!