


DANUBE LIMES BRAND
 International Final Conference

Cooperation with SONDAR –
Soil Strategy Network in the Danube Region

TU Wien, 6. Oktober 2014



*Christian STEINER, Lower Austria / Department of Rural Development
Danube Working Community / Working Group „Sustainability“*





Content:

- *General remarks on soil protection*
- *Working Community of the Danube Regions*
- *Lower Austrian Landscape Fund*
- *Authority of Land Reform*
- *European Land and Soil Alliance ELSA*
- *Lower Austrian Soil Campaign*
- *EU Strategy for the Danube Region*
- *European Cross Border Projects SONDAR*
- *SONDAR +*

Why to protect soil? 8 dangers to soil

- *erosion*
- *loss of organic matter*
- *local and diffuse contamination*
- *soil sealing*
- *compaction*
- *loss of biodiversity*
- *salinisation*
- *landslides*



Soil consumption

Austria: 15 to 20 ha per day

Germany: up to 130 ha per day

Europe:

- 1.000 km² per year in Europe (= area of the City of Berlin)

Worldwide reduction of arable land per capita:

>>> 0,51 ha (1950) >>> 0,27 ha (2000) >>> 0,18 ha (2020)

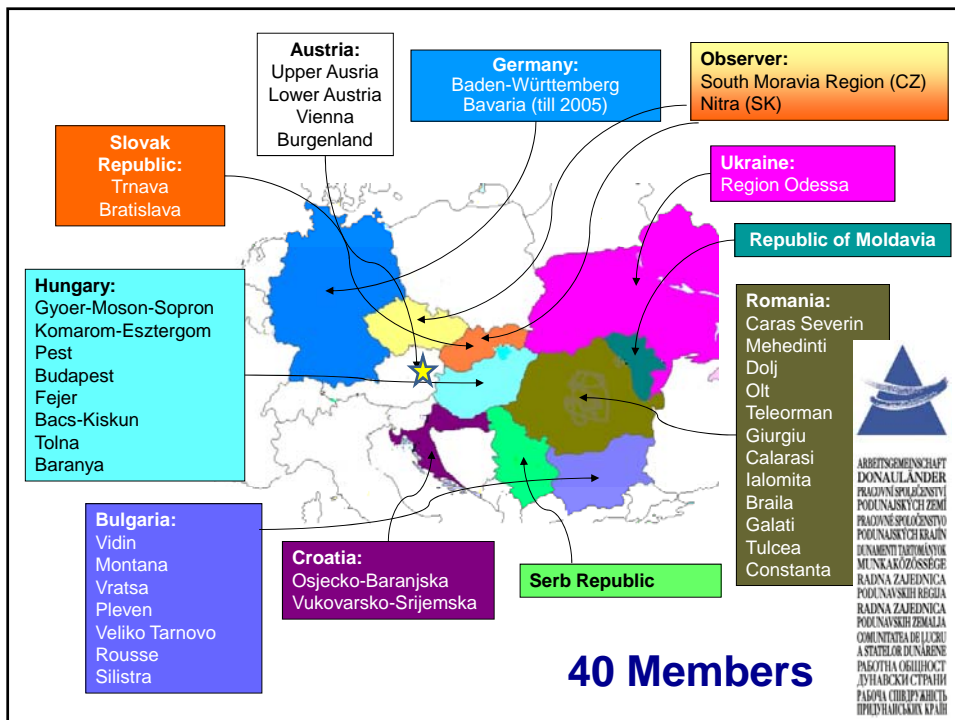


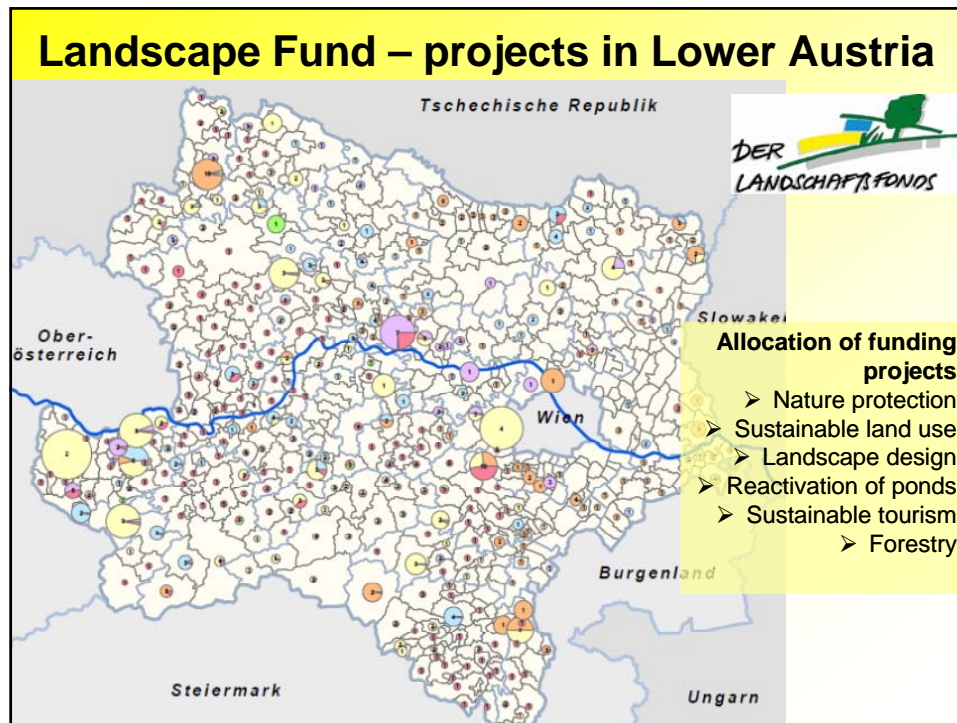
Output of soil life

total value per year: 1,5 to 13 Billion US \$

(Pimentel 1997, Costanza 1997)








DER LANDSCHAFTSFONDS

Project type „landscape design“

Example: planting of hedges, fruit trees and rows of trees

Planting of characteristic traditional fruit trees in rows and orchards, hedges

✓ 5.000 trees per year on average equivalent to a row 60 km long



Example: renovation and reactivation of traditional wine cellars





Project type „sustainable land use“

Example: revitalisation of abandoned or fallow grassland

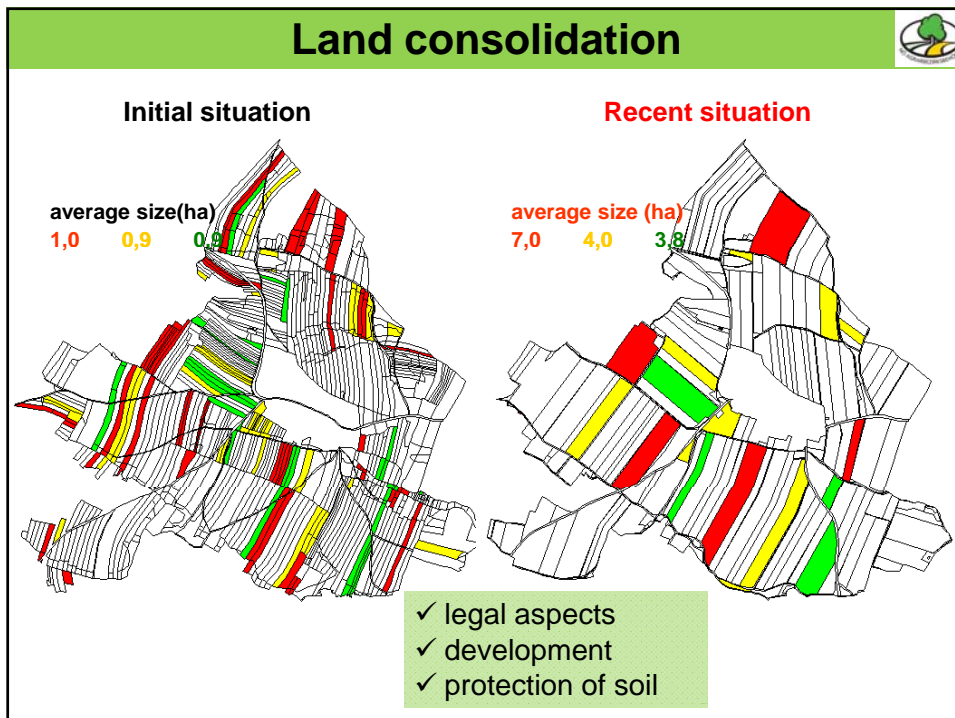
Protection+recovery of mountain pastures




Project type „nature management“

Example: Wachau Volunteer – Youth for Nature

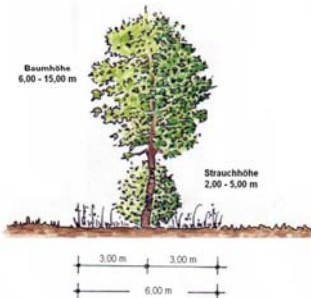
Maintainance of natural hot spots and traditional stone terraces





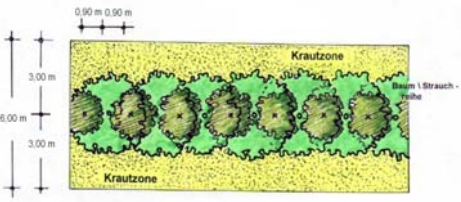
SOIL PROTECTION




Planning and planting of hedges & fruit trees









European Land and Soil Alliance ELSA

- Association of cities and communes
- for an active contribution for a sustainable handling of soil
- ELSA-members commit themselves to determined action on local level.

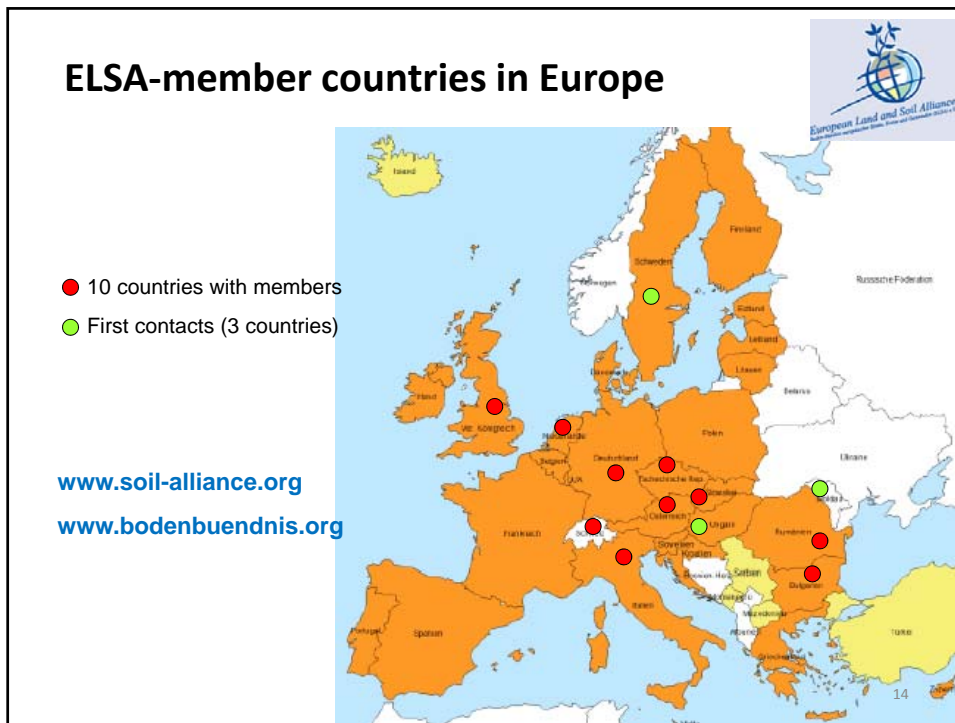
ELSA e.V. is a registered association after German law situated in Osnabrück.

Lower Austria is the leading region with 85 members, and chairs ELSA since 2009.

almost 200 members in 10 European countries



www.bodenbuendnis.org



sozial produziert
www.sozialproduziert.at

NIEDERÖSTERREICHISCHE CHARTA
FÜR DEN LÄNDLICHEN RAUM


unser Boden
wir stehen drauf!
www.unserboden.at

Soil Protection & Awareness Raising

- the value of our limited and non-renewable soil resources and the need for a more sustainable land use
- deepening and extending an **“artistic approach”** towards soil protection through “soilart” and “with the colours of the earth”








unser Boden
wir stehen drauf! 

Eine Initiative von Landeshauptmann Dr. Erwin Pröll
und Landesrat Dr. Stephan Pernkopf


Painting with colours of the earth

activities/materials:

- box with 5 different earth colours
- soil post cards
- soil sign
- calendar

	1:1	1:3	1:5
Schwarzerde			
Braunerde A			
Terra			
Braunerde B			
Stadtboden			



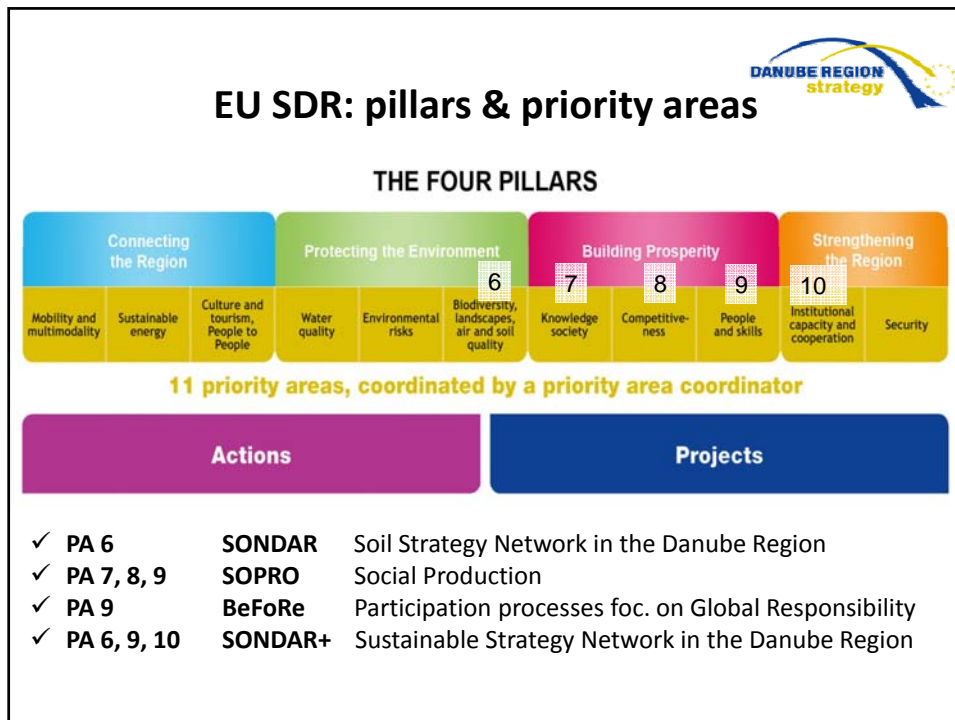
DANUBE REGION
strategy 


EU Strategy for the Danube Region

The strategy is not about funding, it is about closer cooperation!



The map shows the Danube river flowing through several countries: DEUTSCHLAND, CZECH REPUBLIC (ČESKÁ REPUBLIKA), SLOVAKIA (SLOVENSKO), UKRAINE (UKRAJINA), REPUBLIC OF MOLDOVA, ROMANIA (ROMÂNIA), BULGARIA, SERBIA (SRBIJA), BOSNIA AND HERZEGOVINA, CROATIA (HRVATSKA), SLOVENIA (SLOVENIJA), and MONTENEGRO (CRNA GORA). Major cities marked include Praha, Wien, Bratislava, Budapest, Kishinev, Bucaresti, Sofya, Beograd, Sarajevo, Zagreb, Ljubljana, and Podgorica.





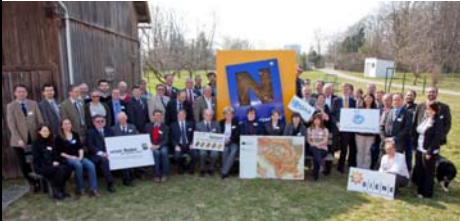

Soil Strategy Network in the Danube Region

3 ETC-projects in Lower Austria with SK, HU, CZ

Soil awareness

Sensibly use, carefully protect our soil

<p><small>In execution:</small></p> <p>SNDAR SK-AT</p> <p>Soil as an indicator of flood occurrences</p>	<p><small>In execution:</small></p> <p>SNDAR HU-AT</p> <p>Soil as a filter for pollutants / soil as a reservoir for carbon</p>	<p><small>scheduled:</small></p> <p>SNDAR CZ-AT</p> <p>Improving quality of soil by raising soil awareness/ soil as an archive</p>
--	---	---







„Social Production“: Creation of Value through Appreciation

Cooperations between enterprises, the public sector and social institutions create sustainable products and services: **from the region – for the region!**

Visions:

- ✓ **Sustainable economy** for all partners
- ✓ **Clear production processes**
- ✓ Enterprises use company waste in an **innovative, value creating way**



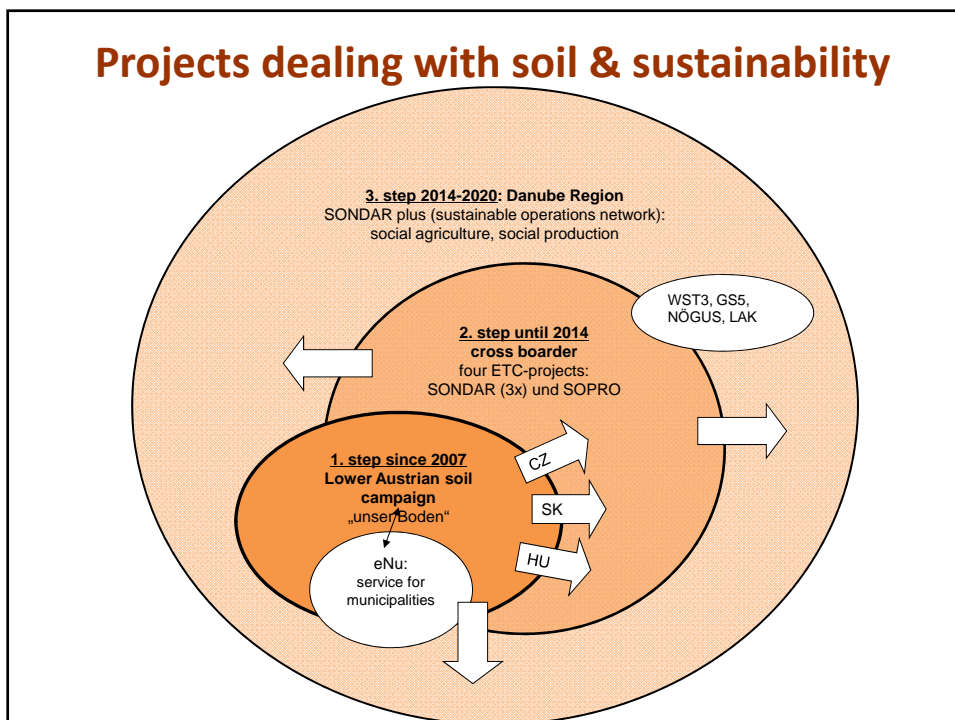

sozial produziert
www.sozialproduziert.at

WIENRÖSTERREICHISCHE CHARITÄT
FÜR DEN LÄNDLICHEN RAUM

unser Boden
wir stehen drauf!
www.unserboden.at

Sustainability / Social Production

1. **Pilot projects** in the region of East Austria / West Hungary
2. Developing **100 examples** of sustainable products and services
3. **Implementation of experiences** through a platform within the framework of the EUSDR in further areas in the Danube region
4. “Best-practice example for local and global responsibility“ of the **Austrian Strategy for Sustainable Development (ÖSTRAT)**

SCIENCE ALLIANCE AWARENESS

SONDAR
Sustainable Operations Network in the Danube Region

Partner logos: CASEE, Soiiart, sozial produziert, DANUBE REGION strategy, AK, AMS, ATAM, GAW, bdv, a|i|e|w|e, bioforschungszentrum, BMV, break your, GUD, EKOVIN, greencare, IAD, KTI, LEED, M, N, OIN, P, R, S, VHS, ZERA.

**„A nation that destroys its soils destroys itself.“
(Franklin D. Roosevelt, 1937)**

Thank you for your attention!

DI Christian Steiner & DI Dr. Erwin Szlezak
ARGE Donauländer, Arbeitskreis Nachhaltigkeit
NÖ Agrarbezirksbehörde/Fachabteilung Landentwicklung
Landhausplatz 1, 3109 St. Pölten
christian.steiner@noel.gv.at erwin.szlezak@noel.gv.at
www.unserboden.at / www.sondar.eu / www.soilart.eu / www.sozialproduziert.at

ARBEITSGEMEINSCHAFT DONAULÄNDER
PRACOVNI SPOLEČENSTVÍ PODUNAVSKÝCH ZEMÍ
PRACOVNÉ SPOLOČENSTVO PODUNAVSKÝCH KRAJIN
DUNAMENTI TARTOMÁNYOK
MUNKAKÖZÖSSÉGE RADNA ZAJEDNICA PODUNAVSKIH REGIJA
RADNA ZAJEDNICA PODUNAVSKIH ZEMALJA
COMUNITATEA DE LUCRU A STATELOR DUNĂRENE
РАБОТНА ОБШІНОСТ ДУНАДСКИ СТРАНИ
РАБОЧА СПІВРУЖІТЬ ПРІДУНАВСЬКИХ КРАІН